

DO NOT SCALE

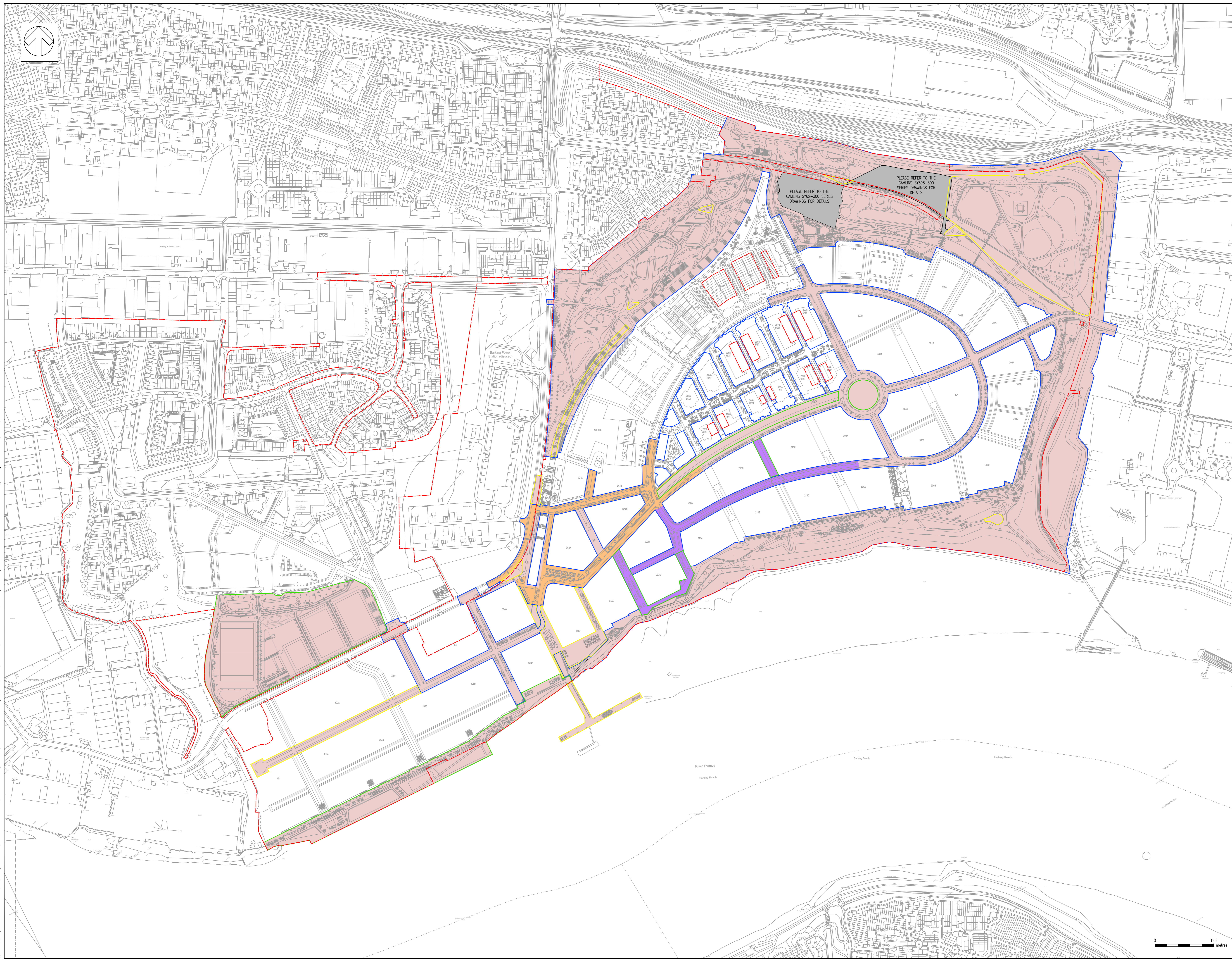
KEY

- REDLINE BOUNDARY
- AREA WITHIN SCOPE OF ORIGINAL SIS SUBMISSION
REF: 18/00768/REM
- REVISION OF ORIGINAL SIS SUBMISSION --
AREA WITHIN SCOPE OF DISTRICT CENTRE SIS
SUBMISSION
REF: 22/00413/REM
- REVISION OF ORIGINAL SIS SUBMISSION --
AREA WITHIN SCOPE OF STAGE 2 SOUTH &
DISTRICT CENTRE EAST SIS SUBMISSION
- SIS SUBMISSION FULL DETAILS
- SIS SUBMISSION REFERENCE DESIGN
- SIS SUBMISSION ILLUSTRATIVE

- NOTES**
1. THIS DRAWING SHOWS THE GENERAL LEVEL OF DESIGN SUBMITTED FOR ANY GIVEN AREA AS PART OF THE SIS SUBMISSION.
 2. WITHIN THESE AREAS SPECIFIC ELEMENTS MAY BE SUBMITTED TO A HIGHER OR LOWER LEVEL OF DETAIL. THIS IS TYPICALLY CAPTURED IN GENERAL ARRANGEMENT DRAWINGS.

PLEASE REFER TO THE
CAMLINS SY62-300 SERIES
DRAWINGS FOR DETAILS

PLEASE REFER TO THE
CAMLINS SY68-300 SERIES
DRAWINGS FOR DETAILS



APP	14/07/2023	DOC	APPLICATION BOUNDARY UPDATED	LM	LM
APP	04/07/2023	DOC	FIRST ISSUE	LM	LM
REV	DATE	BY	DESCRIPTION	CHK	APP

DRAWING STATUS: PLANNING APPLICATION



Unit 9 The Chase, John Tate Road
Foxholes Business Park, Hertford SG13 7NN
Tel: +44 (0)1992 526000 Fax: +44 (0)1992 526001
www.wsp-uk.co.uk



PROJECT: BARKING RIVERSIDE LONDON
TITLE: STAGE 2 SOUTH & DISTRICT CENTRE EAST SIS CONTEXT PLAN

SCALE @:	1:2500	CHECKED:	LM	APPROVED:	LM
PROJECT NO:	70018976	DESIGN/ISSUED:	DOC	DATE:	July 23

DRAWING NO: BRL-WSP-S2S-DC-XX-DR-D-0011
REV: P02

© WSP Group Ltd

\\uk.wspgroup.com\central_data\Projects\70018976\1- Barking Riverside Stages 2-4-E Models and Drawings\Development\AUTOCAD\CA General Arrangement\S2S-DC\BRL-WSP-S2S-DC-XX-DR-D-0011.dwg, 13 July 2023 13:51, Curtis, Sam